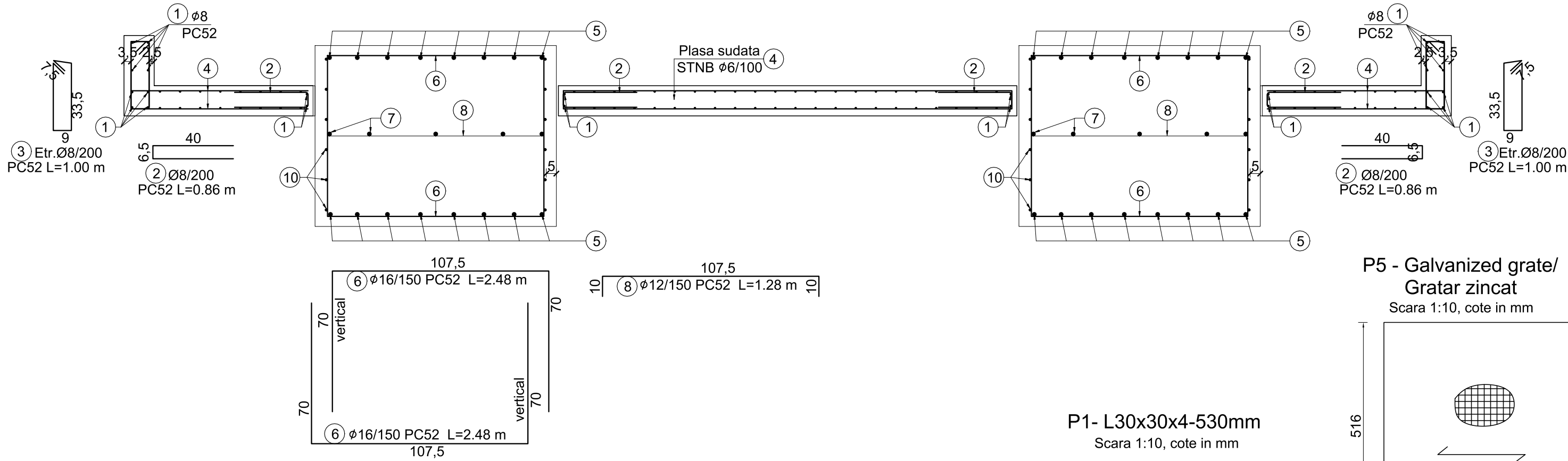


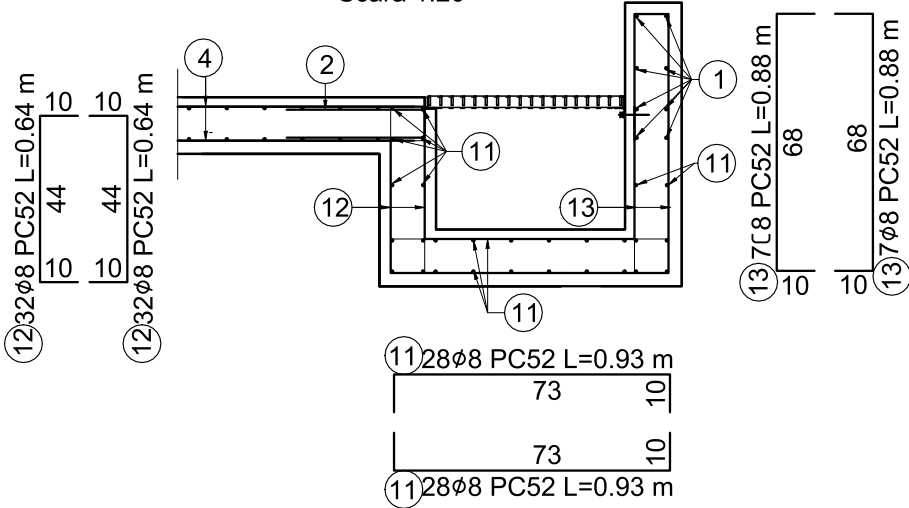
# Sectiune A - A

- armare -  
Scara 1:20



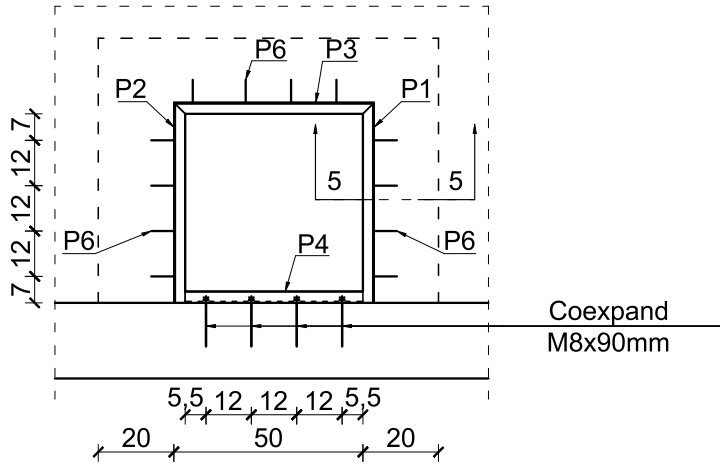
# Sectiune B - B

- armare -  
Scara 1:20



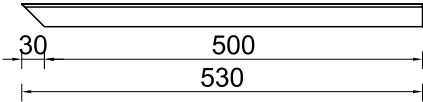
# Corniere inglobate in perete

- vedere in plan -  
Scara 1:20

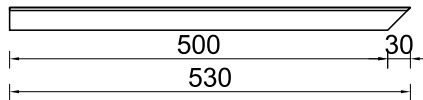


# P1- L30x30x4-530mm

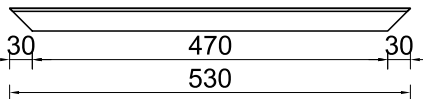
Scara 1:10, cote in mm



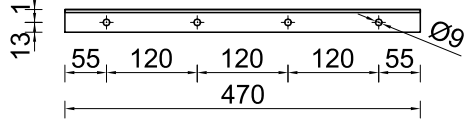
# P2- L30x30x4-530mm



# P3- L30x30x4-530mm



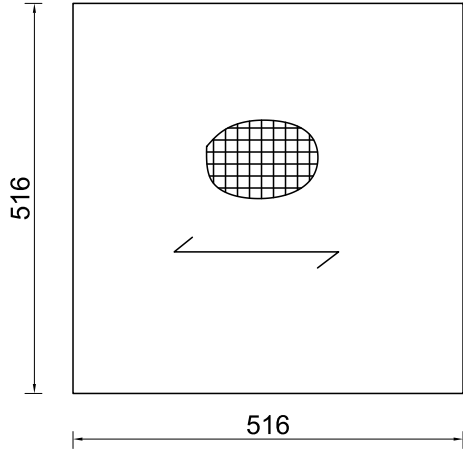
# P4- L30x30x4-470mm



# P5 - Galvanized grate/

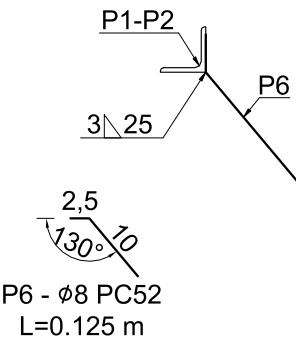
Gratar zincat

Scara 1:10, cote in mm



# Section / Sectiune 5-5

Scara 1:5, cote in mm



# Note :

- Categoria de importanta "C" conf. HG 766/1997
  - Clasa de importanta "III" conform P100-1/2013;
  - Incarcari climatice:
    - Conform cu CR 1-1-3/2012, structura este amplasata intr-o zona cu valoarea caracteristica a incarcarii din zapada la sol de 1.5kN/m²;
    - Conform cu CR 1-1-4/2012, structura este amplasata intr-o zona cu valoarea presiunii de referinata a vantului de 0.6kN/m²;
  - Constructia este amplasata in zona seismica cu acceleratia terenului pentru proiectare ag = 0.20g si perioada de control(de colt) Tc = 0.7 s - conform P100 - 1/2013;
  - Toate cotele sunt in mm daca nu sunt precizate altfel.
- Domeniul de exigenta: A1.**

# MATERIALE:

- BETON :
  - Beton armat - C25/30 - XC4+XF1;
  - CI 0.20;
  - CEM II A-S 32.5 N sau R;
  - S3;
  - Granulatie agregate Dmax. 16mm
- Egalizare - C12/15 - X0;
  - CI 1.0;
  - CEM II A-S 32.5 N sau R
  - S1-S3
  - Granulatie agregate Dmax. 22mm
- ARMATURA: PC52.

EXTRAS ARMATURA - CUVA SI FUNDATII POMPE									
Mark/ Marca	Areal/ Aria (mp)	Diameter/ Diametru (mm)	Length/ Lungime (m)	Pieces/ Bucati	Total length / Lungimi totale				
					PC52			STNB	
					Ø8	Ø12	Ø16	Ø6	
1		8	500	1	500				
2		8	0,86	160	137,6				
3		8	1	150	150				
4	70	6							1400
5		16	7,8	32				249,6	
6		16	2,48	172				426,56	
7		16	6,6	10				66	
8		12	1,28	86		110,08			
9		12	2	24		48			
10		12	7,8	24		187,2			
11		8	0,93	28	26,04				
12		8	0,64	44	28,16				
13		8	0,88	20	17,6				
Length on diameter/ Lungime Ø (m)					859	345	742	1400	
Weight on linear meter (kg/m)/ Greutate pe metru liniar (kg/m)					0,395	0,888	1,578	0,222	
Weight on diameter / Greutate pe diametru (kg)					339	306,6	1171,1	310,8	
Total weight on rebar type (kg)/ Greutate totala pe marca otel (kg)					1817			311	
Total weight for one foundation / Greutate totala, pentru o fundatie (kg)					2128				

STEEL WORKS BILL OF MATERIALS / EXTRAS LAMINATE							
Pos.	Name Nume	Technical norm/ Standard produs	Material Material	Pcs. Buc.	Dim. (mm)	Weight / Greutati	
						Kg/pcs	Total kg/pos.
P1	L30x30x4	SR EN 10056	S275	1	530	0.94	0.94
P2	L30x30x4	SR EN 10056	S275	1	530	0.94	0.94
P3	L30x30x4	SR EN 10056	S275	1	530	0.94	0.94
P4	L30x30x4	SR EN 10056	S275	1	470	0.84	0.84
P5	Grate	DIN 24537	S275	1	30x516x516	8.00	8.00
P6	Ø8	SR 438-1:2012	OB37	8	125	0.50	4.00
P7	Tv.Ø160x5	SR EN 10219	S275	1	300	5.70	5.70
P8	Plate	SR EN 10029	S275	1	6x260x260	3.20	3.20
Total (kg)							25

02	18.03.2022		Emis pentru utilizare
01	14.03.2022		Emis pentru utilizare
Revizie	Data	Modificare ceruta de	Descriere modificare

Verificator / Expert	Nume	Semnatura	Cerinta	Referat / Expertiza Nr. / Data
Proiectant general	ROENGG CONSULTING SRL			Beneficiar : CONPET S.A.
Proiectant de specialitate	RO 24611389 / 0344 806 979 / contact@roengg.com			
Titlul proiectului :				INLOCUIRE GRUP DE POMPARE TITEI DEPOZIT SATCHINEZ JUDETUL TIMIS
Proiectat	Nume	Semnatura	SCARA :	Titlul plansei :
Verificat	Birtodeanu Cristian		1:50	PLAN COFRAJ SI DETALII FUNDATII GRUP POMPE TITEI
Aprobat	State George		DATA :	Plansa:
	Dobleaga Stefan		18.03.2022	10202020-RNG-DM-12-001-02
				FAZA : P.T.+D.D.E
				PAGINA: 2/2